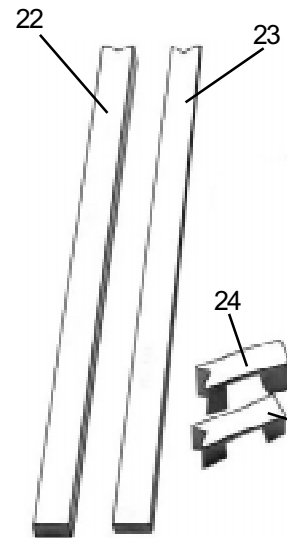
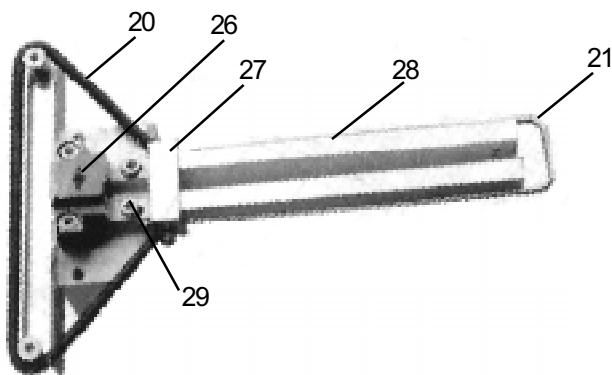
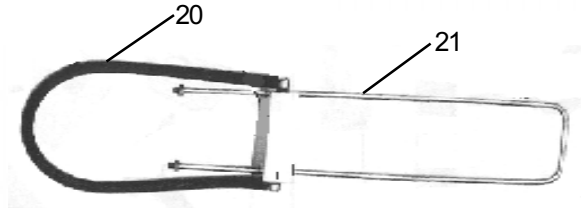
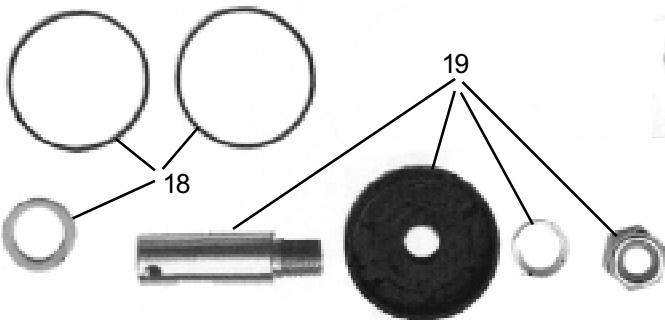
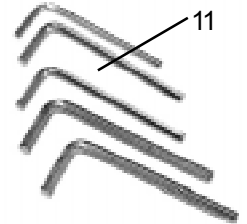
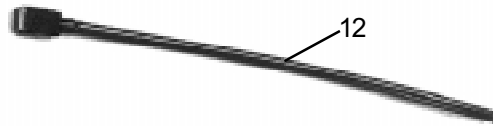
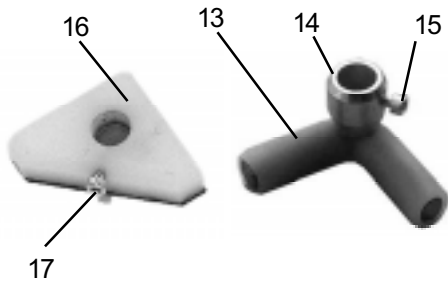
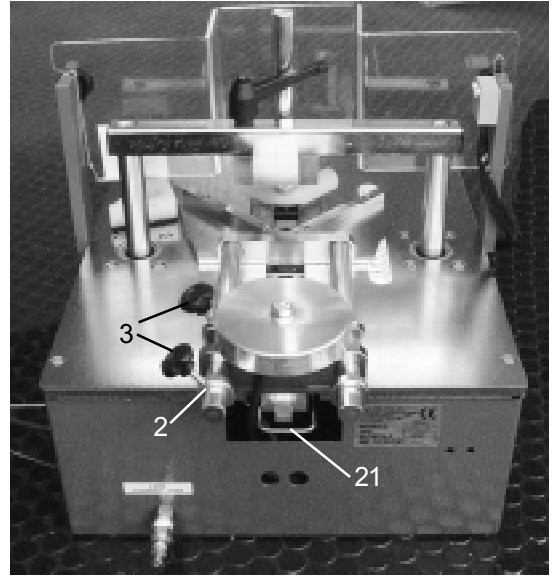
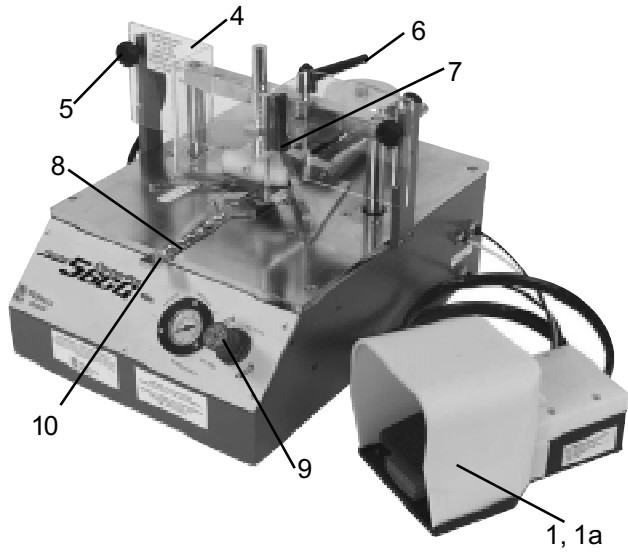


SPARE PARTS



SPARE PARTS

<u>Ref. No.</u>	<u>Part No.</u>	<u>Description</u>	<u>Quantity</u>
1	16-001	Foot Pedal Assembly	1
1a	16-002	Foot Pedal Valve	1
2	16-003	Stop Collar	2
3	16-004	Locking Knob	2
4	16-007	Plastic Guard	1
5	16-006	Plastic Guard Knob	2
6	16-011	Upper Clamp Slide Locking Lever	1
7	16-029	Upper Clamp Shaft Locking Lever	1
8	16-010	Front Clamp Operating Screw	1
9	16-009	Regulator Knob	1
10	16-070	Front Clamp Bar	1
11	16-074	Hex Wrench Set (5)	1
12	16-013	Magnet	1
13	16-037	Round Angular Pad	1
14	16-038	Round Angular Pad Bushing	1
15	16-036	Round Angular Pad Screw	1
16	16-039	Flat Angular Pad	1
17	16-040	Flat Angular Pad Screw	1
18	16-034	Gasket Set for Hammer Cylinder	1
19	16-035	Piston Assembly for Hammer Cylinder	1
20	16-022	Follower Spring	1
21	16-027	Follower	1
22	16-041	7mm Compensator	1
23	16-042	10mm Compensator	1
24	16-044	Pusher (10mm/12mm/15mm)	1
25	16-043	Pusher (7mm)	1
26	16-020	Hammer	1
27	16-023	Nail Block	1
28	16-024	Nail Path Guide	1
29	16-025	Nail Path Guide Screw	2