

IMC-3400L Auto Board Feeder

Smart automation for digital print processes



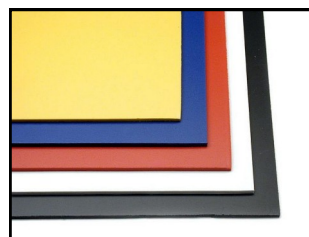
Smart automation for digital print processes

In a world of larger format printed materials and faster production speeds, the new IMC-3400L Auto Board Feeder from Infinite Motion Control is your solution for material handling.

It's the first feeder able to pick & feed sheets directly from a pallet. The ABF gives your workers more time to focus on quality and process functions rather than repetitive manual activities. Time and labor savings is increased when feeding multiple boards across from the same pallet.

The Infinite Motion Control ABF Advantage:

- **Versatility:** Feeds all sheet and board types from 2mm though 50mm thick. Paper, plastic, corrugated, composites are all handled the same. Payloads up to 50 kg (110-pounds).
- **Speed:** At 4 feed cycles per minute, the ABF can keep a continuous flow of material moving into your print or finishing process without interruption.
- **Accuracy:** Servo motor driven axes provide pin-point board placement repeatability within 1 mm. An optional Alignment Table Module can position each sheet to a reference edge for the more demanding operations like borderless printing.
- **Reduced handling:** No more intermediate stacking, scissors lifts, work tables, etc. You can use your own process pallets, or even the generic pallets your boards were shipped on! Load with a fork truck or pallet-jack.
- **Configurable:** Three basic feeder sizes cover all board widths from 1.6m to 3.2m, in either portrait or landscape mode. You can choose based on your production needs.
- **Integrated:** Using simple communication signals from your cutter or printer, the ABF's controller manages its own functions coordinated to the host machine. A touch-screen on its free-standing operator station gives your operator set-up and feedback information.



IMC-3400L Auto Board Feeder

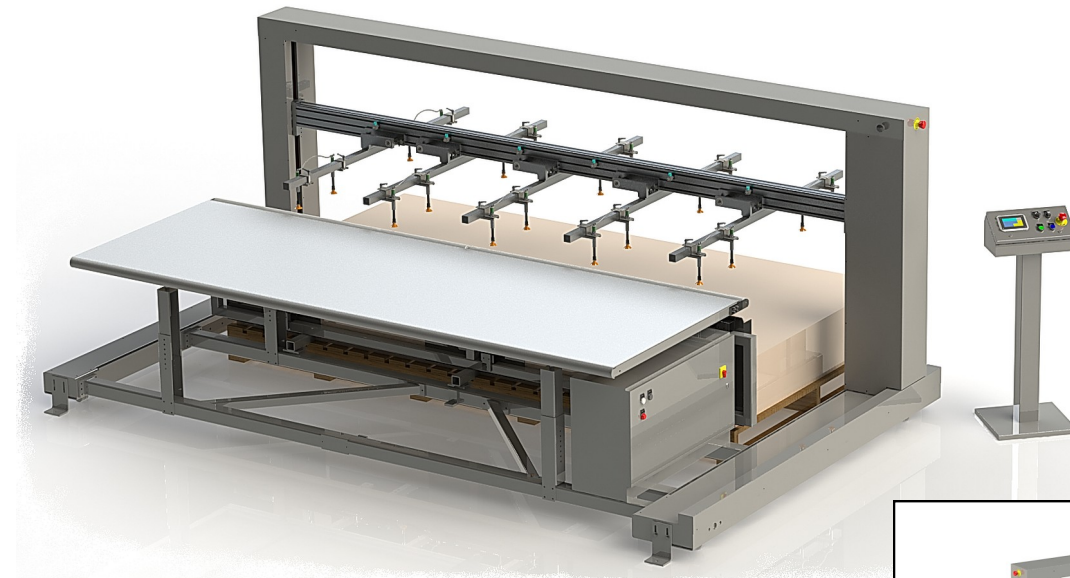
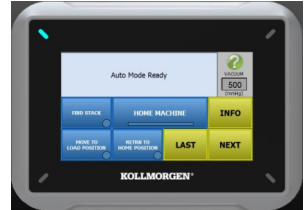
The first handler able to pick & feed sheets directly from a pallet.

Ergonomic

Convenient working heights, no lifting required

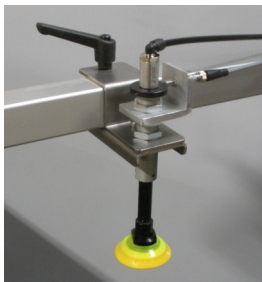
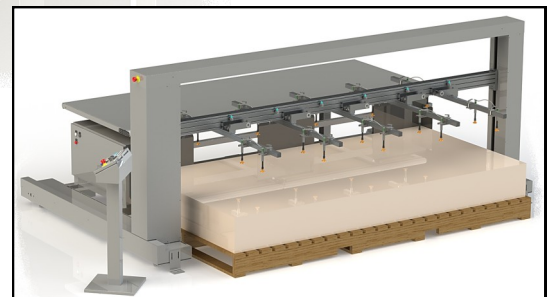
Operator HMI

Color touch screen,
Easy to learn menus



Safety

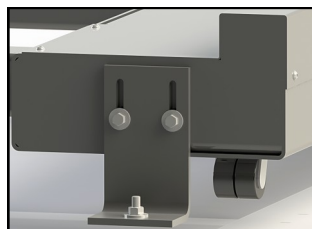
Tapeswitch bumpers on
moving components and
at danger points



Vacuum cups

Compensates for uneven
stacks

Replaceable cups



Docking / anchoring

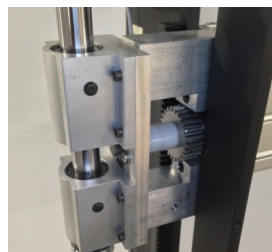
Attach to floor, or roll away if
needed

Stack sensing

Auto-teach function, with
logic to adapt to addition
or removal of sheets

Tool-less adjustments

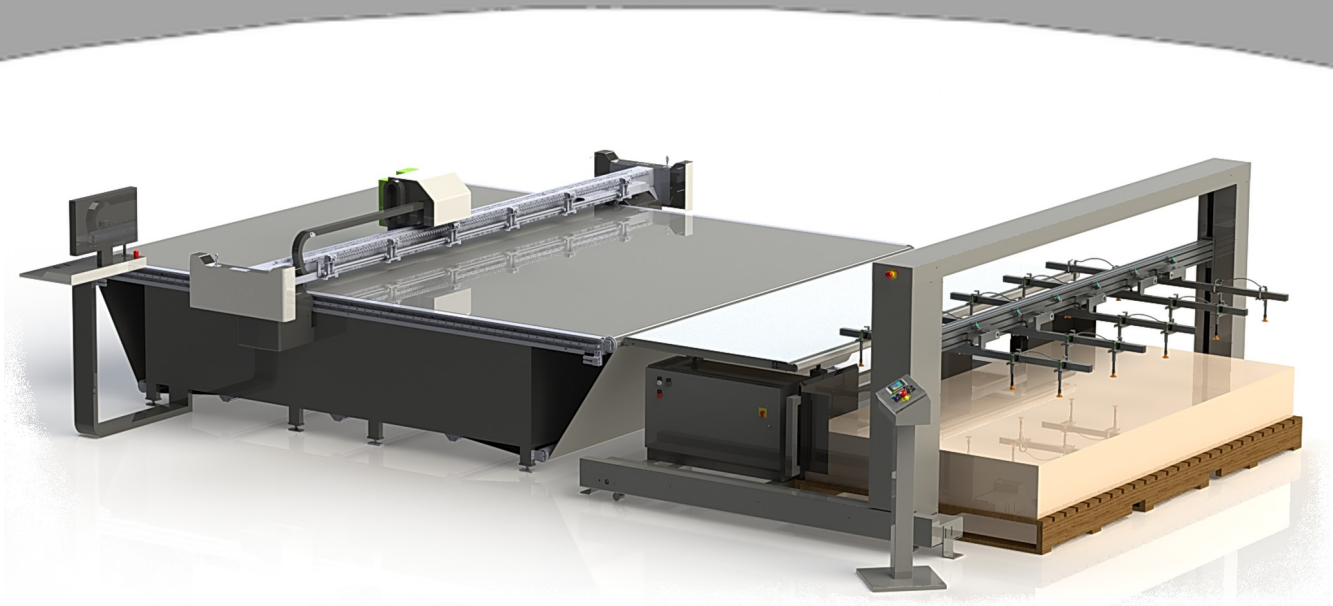
Positioning utilizes Kipp
handles for cups & arms



Low maintenance

Sealed bearings,
robust drive components

IMC-3400L Auto Board Feeder



IMC-3400L Auto Board Feeder Specifications

Overall Dimensions

3960 (W) x 2360 (L) x 1640 (H) mm (Model 3400L)
(156 W x 93 L x 65 H inches)

Weight

840 kg (Model 3400L)
(1850 lbs)

Electrical

208-240 V, 1-phase, 15 A, 50/60 Hz

Compressed Air

56 LPM @ 4.1 bar
(2 SCFM @ 60 psi)

System Integration

Cycle adaptive learning feature
Digital signal handshake via RS232 communication to cutter
Other options available for printers

Performance Parameters

Max working width = 3200 mm (126 inches)
in 3400L configuration
Maximum speed = 4 boards / minute
Minimum board thickness = 2 mm (0.08 in)
Maximum board thickness = 50 mm (2.0 in)
Maximum stack height = 915 mm from floor (36.0 in)
Maximum weight = 10 kg/m² (2.04 lb/ft²)
Maximum rigid weight = 50 kg (110 lbs)
Media feed-up repeatability = +/- 0.5 mm (0.02 in)
Media loading up to 4 boards at the same time, dependent on rigidity

Engineered & Mfg by

Infinite Motion Control, Inc.
10520 N. Baehr Road, Suite P
Mequon, WI 53092
USA
Tel. +1 262 242 4333
www.infinitemc.com

Represented by

Esko
8535 Gander Creek Drive
Miamisburg, OH 45342
USA
Tel. +1 937 454 1721
info.usa@esko.com

